

ACCOPS



Accops HyWorks v3.0

Quick Start Guide

Last Update: 4/25/2017

©2017 Accops Technologies Pvt. Ltd. All rights reserved.

The information contained in this document represents the current view of Propalms Technologies Pvt. Ltd. on the issues discussed as of the date of publication. Because Propalms must respond to changing market conditions, it should not be interpreted a commitment on the part of Propalms and Propalms cannot guarantee the accuracy of any information presented after the date of publication.

This document is for informational purposes only. Propalms makes no warranties, express or implied, in this document.

Complying with all applicable copyright laws is the responsibility of the user. Without limiting the rights under copyright, no part of this document may be reproduced, stored in or introduced into a retrieval

Accops HyWorks 3.0 – Quick Start Guide

system, or transmitted in any form or by any means (electronic, mechanical, photocopying, recording or otherwise) or for any purpose, without the express written permission of Propalms Technologies Pvt. Ltd.

Contact Accops Technologies Pvt. Ltd.

Email: info@accops.com

Call: +91 9595 277 001

TABLE OF CONTENTS

Introduction.....	3
About HyWorks.....	3
HyWorks Components	3
Accops HyWorks Deployment Options	4
HyWorks Deployment in LAN Environment.....	4
HyWorks Deployment in WAN Environment.....	5
HyWorks Quick Configuration Steps	6
Step#1: Install HyWorks controller Service and Management Console	7
Step#2 Adding Authentication Server and Authentication Domain Configuration	7
Step#3: Choose Deployment Type and Identify Required Resources	8
Step#4.1: Resource Configurations in Shared VDI	8
Step#4.2: Resource Configurations in Dedicated VDI	11
User Logon for Verification.....	12
HyWorks Deployment with Multi-Organization Structure	12
Organization in HyWorks	12
Quick Configuration Steps for Multi-Organization Structure.....	13
Install HyWorks Controller	14
Configure Resources at Default Organization Level	14
Create Child Organization	14
Move to Child Organization and Configure Resources at Child Organization	15
User Logon for Verification.....	15
Assumptions	16
References.....	16

INTRODUCTION

ABOUT HYWORKS

Accops HyWorks Suite is solution for deploying a secure, cost effective, less power consuming, less space consuming virtualized infrastructure for organizations.

Fact that it can be deployed with VMware (vCenter Server or ESXi), Microsoft Hyper-V or SCVMM and Microsoft RDS makes it suitable for all the organization either organization willing to deploy the fresh virtualized infrastructure or organizations which are already having virtualized infrastructure in place.

The HyWorks Suite can be used to serve

- Dedicated desktops from virtualization platforms VMware and Microsoft Hyper-V
- Shared hosted desktops and applications from Microsoft Remote Desktop Servers (Windows 2008R2, Windows 2012R2, Windows 2016).

HYWORKS COMPONENTS

The following table lists the core components of HyWorks Suite, its necessity in deployment, download location of the same, where can it be installed etc.

Component	Is Necessary	Installation Platforms
HyWorks Controller Service	Must have (Installed with HyWorks Controller)	Windows 2008 R2, Windows 2012 R2 or Windows 2016
HyWorks Controller Management Console	Must have (Installed with HyWorks Controller)	Windows 2008 R2, Windows 2012 R2 or Windows 2016
HyWorks License Service	Must have (Installed with HyWorks Controller)	Windows 2008 R2, Windows 2012 R2 or Windows 2016
HyWorks Upgrade Service	Good have for automatic upgrade of HyWorksTools (Installed with HyWorks Controller)	Windows 2008 R2, Windows 2012 R2 or Windows 2016
HyWorks Session Host Server	Must for application and shared hosted desktop delivery Can be installed on HyWorks Controller or separately	Windows 2008 R2, Windows 2012 R2 or Windows 2016
HyWorks Monitoring Service	Must if Adaptive load balancing is needed. Can be installed on HyWorks Controller or separately	Windows 2008 R2, Windows 2012 R2 or Windows 2016
HyDesk Devices or HyWorks Clients	Must have	HyDesk Thinclients with integrated HyWorks Client HyWorks Client – Client software installed on

			supported Windows/ Linux platforms	
Dedicated VDI	In-Built Connection Broker (Session provider)	VMware ESXi or vCenter Server	Either of these must be configured for providing dedicated desktops to end users Recommended - In-built connection broker	Please refer respective documents from VMware, Microsoft or Pano Controller deployments
	External Session Provider - Pano Controller	Microsoft Hyper-V or SCVMM		
Shared Hosted VDI using TSE	External Session Provider– TSE	Either of the two must be configured for shared hosted VDI Recommended – HyWorks Session Host Server instead of TSE	TSE – To be installed on Windows 2008 R2/ Windows 2012 R2 VM Support for only Shared Host Desktops from TSE, applications cannot be served with HyWorks from TSE servers.	
Accops HyWorks Hyper-V Connector	Installed on Microsoft Hyper-V/ SCVMM server	Yes, if Hyper-V or SCVMM servers to be used as dedicated session provider	Microsoft Hyper-V/ SCVMM server	
Accops HyWorks Tools	HyWorks DVM Agent	Yes, for In-build Connection Broker	On all virtual machines, for configuring remote access and policy managements	
	USB Redirection Software	Optional (Required for USB device sharing)	On all virtual machines for redirecting USB redirection	
Pano Direct Service	Yes, if Pano Controller is configured as Session Provider	Yes, On All Virtual Machines to be served from Pano Controller	On All Virtual Machines to be served from Pano Controller	

ACCOPS HYWORKS DEPLOYMENT OPTIONS

Accops HyWorks v3.0 can be used to deliver applications, shared hosted desktops or dedicated desktops in following two environments:

1. [In LAN Environment](#)
2. [In WAN Environment over the internet](#)

HYWORKS DEPLOYMENT IN LAN ENVIRONMENT

Deployment of HyWorks in LAN environment will require following infrastructure:

1. HyWorks Controller installed and available in the LAN and no firewall or third party software blocking HyWorks Controller
2. HyDesk or HyWorks Clients are installed up and running in the same network and able to connect HyWorks Controller using either of the following settings

Accops HyWorks 3.0 – Quick Start Guide

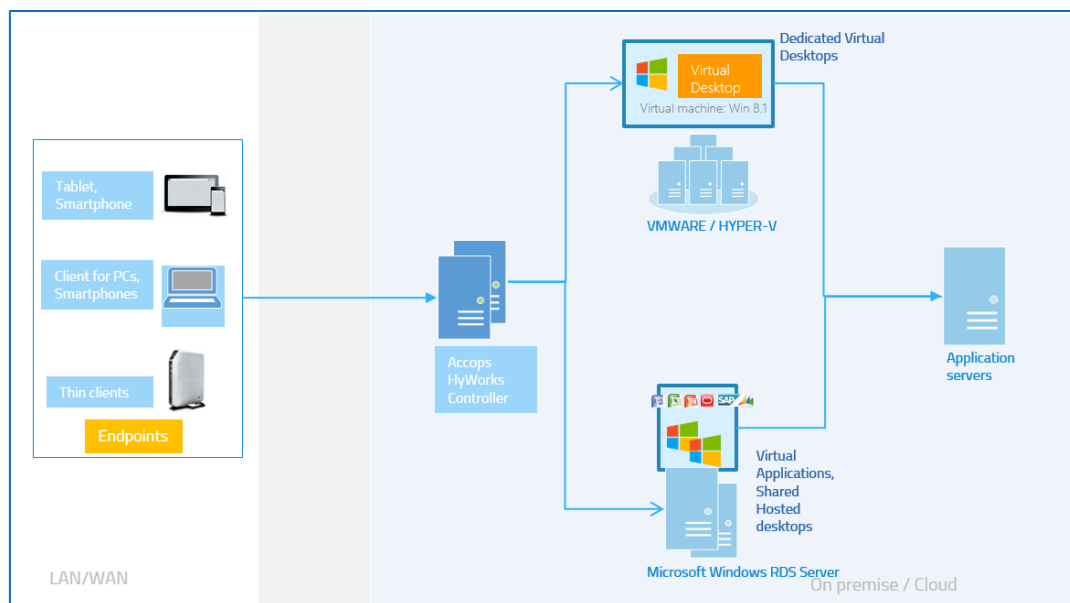
- a. Detect HyWorks Controller Automatically
- b. Connect to a local HyWorks Controller
3. Dedicated Desktops:
 - a. Session Providers (e.g. VMware vCenter Server or Microsoft SCVMM Server) and authentication servers e.g. Microsoft Active Directory are available in the same network, HyWorks Controller has direct access to providers
 - b. DVMs running on Session Providers are directly reachable to HyDesk/ HyWorks Client devices
4. Shared Hosted or Desktops:
 - a. Accops HyWorks Session Host server is installed on Microsoft RDS server and it configured in HyWorks
 - b. HyWorks Session Host server is directly accessible from HyWorks/ HyDesk client.

Refer deployment image shown below.

It shows that the device should be able to talk to the Accops HyWorks Controller on port 38866 and to virtual machine on TCP port 3389

Note:

The LAN environment is highly encouraged for better performance in remote sessions.



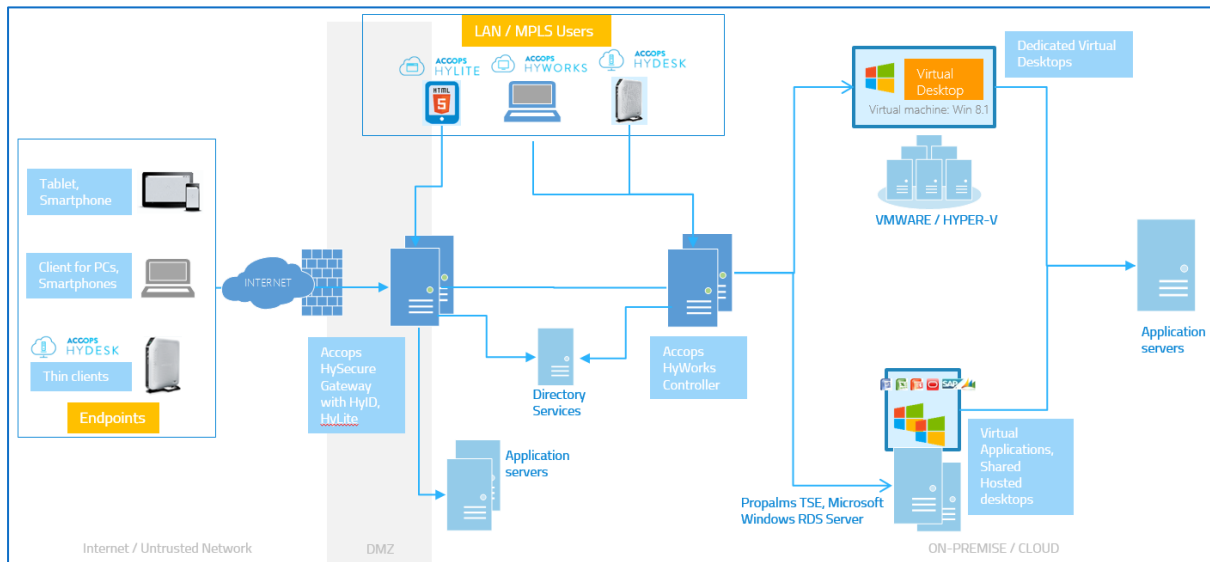
HYWORKS DEPLOYMENT IN WAN ENVIRONMENT

To access applications, shared hosted desktops or dedicated desktops over WAN it is recommended to have HyWorks and HySecure deployed together and integrated.

In usage situations like access over Internet, the user may not have direct access to Accops HyWorks Controller, Session host, dedicated session providers or DVMs, HyWorks can be deployed in integrated with HySecure.

The feature enables the device to connect to the VM through Accops HySecure Gateway.

Refer deployment image shown below.



Highlights of the WAN configuration will be:

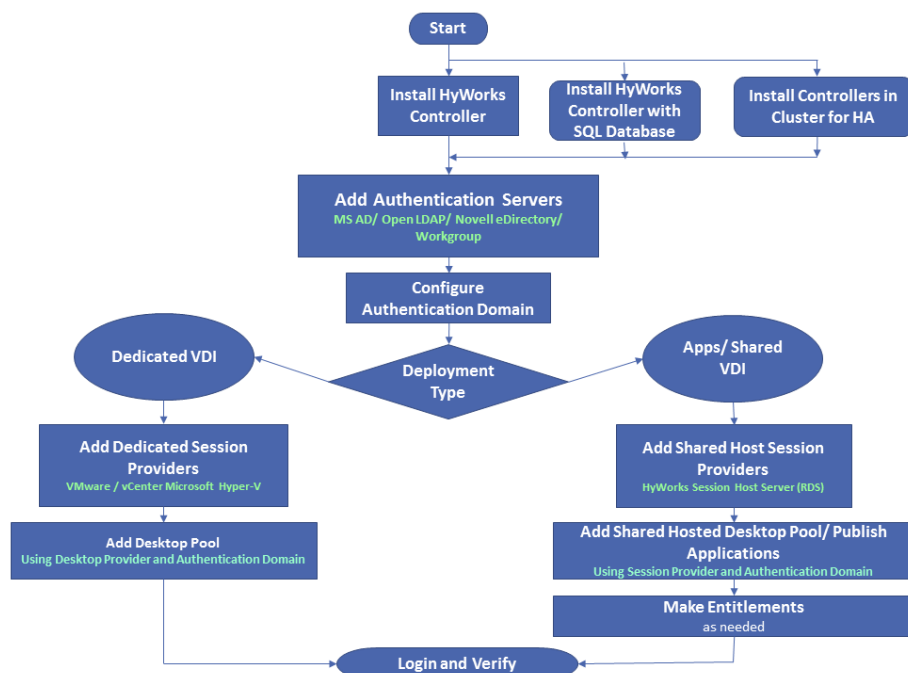
1. Devices (over the internet) can directly access Accops HySecure Gateway using Public IP
2. HySecure Gateway is correctly configured to have applications as
 - a. HyWorks Controller (Port:38866)
 - b. HyWorks Application Servers (3389) for applications and shared desktop access
3. HyWorks Controller is having all the configurations setup correctly i.e. Session host Servers, Authentication servers, Session Teams, Applications, Desktop Pools, assignments etc.

HYWORKS QUICK CONFIGURATION STEPS

If the Organization hierarchy is flat and does not require the resources to be separated, single organization structure is very easy. This section provides details for quickly configuring the HyWorks in such environment.

Multi organization deployment is explained later in this documents.

Plan well before starting the deployment, makes it very clear and helps the teams to understand the requirements and solutions.



Coming sections in this document will explain each of these steps briefly, so that administrators can easily deploy HyWorks in their organization.

Later in this document, some example configurations will be explained to help in understanding the deployment processes.

STEP#1: INSTALL HYWORKS CONTROLLER SERVICE AND MANAGEMENT CONSOLE

The first step is to install HyWorks Controller, as specified in above section.

HyWorks Controller and Management Console installation is very easy and can be done by simply following the installation wizard.

HyWorks Controller Installation can be done in following ways:

1. Small deployments with less than 100 concurrent users
 - a. In such case HyWorks Controller can be installed with Embedded Database with no additional configurations
2. Large Deployments with 1000 users with no HyWorks HA
 - a. In this case, HyWorks Controller should be installed with SQL Servers but with no additional configurations
3. Large Deployments with HyWorks HA
 - a. For HyWorks Controller clustering, Controllers must be installed with SQL Server and with some additional prerequisites.
 - b. Configure HyWorks Controller Cluster to support High Availability

Please refer HyWorks v3.0 Installation Guide for detailed information on HyWorks Installation.

STEP#2 ADDING AUTHENTICATION SERVER AND AUTHENTICATION DOMAIN CONFIGURATION

Next step could be adding the authentication server and configuring the authentication domain to specify Authorization and authentication servers.

Following types of authentication servers can be configured with HyWorks 3.0

- Microsoft Active Directory
- Novell Directory/Open LDAP
- Built-in (by default available)

Configure Authentication Server: follow the below steps:

1. Go to Configuration -> Server -> Authentication Section: Click on **Add** button
2. In Authentication Server widow
 - a. Select Appropriate Server Type e.g. Microsoft Active Directory, Novell Directory/ Open LDAP
 - b. Provide appropriate Server address e.g. 192.168.1.1 or Accops.com
 - c. Provide Base DN information (Mandatory for Novell Directory/ Open LDAP, optional for Microsoft AD and not required for Workgroup)
 - d. Provide administrator credentials with rights to read and write access to user account managements
3. Click on Test Connection button
4. Once the successful connection message appears, click on Add button
5. Authentication Server is configured now

Note: For External Desktop Brokers (TSE or Pano Controller), Authentication server configuration is not needed as the user authentication and authorization management is done by them

Configure Authentication Domain: HyWorks v3.0 requires the authentication domain to be configured from Organization wizard.

Authentication domain defines the server to be used for authentication, server to be used for authorization, domain name to be used for connections etc.

To configure Authentication domain, follow the below steps:

1. Go to Configuration -> Workspace -> Organizations
2. Select the **Default** organization and click on **Edit** button
3. In **Update Organization**, wizard go to Authentication Domain section and specify
 - a. Authentication Server: Authentication during user logon will be done with this server
 - b. Authorization Server: All assignments and entitlements will be done from this server
 - c. Domain Name to be fetched from
 - d. If using Authorization server as Built-in, then it can provide some more options as
 - i. **Synchronization Type:** Keep as none, to synchronize manually or set as On Login to create/ update users on login
 - ii. **Use Built-in Credentials:** Select this option to make HyWorks connect using built-in credentials, if unchecked then connection will be made using logged-in user credentials
4. Once all configurations of Authentication domain are completed, go to the **Desktop Client Settings** tab and click on **Save** button
5. Authentication domain is now configured.

STEP#3: CHOOSE DEPLOYMENT TYPE AND IDENTIFY REQUIRED RESOURCES

Once HyWorks Controller is installed and ready, it is must to understand the requirements and deployment type.

Dedicated VDI: Dedicated VDI will require either of following session providers to be available

- i. VMware ESXi/ vCenter Server
- ii. Microsoft Hyper-V/ SCVMM server

Shared VDI/ Application Delivery: Shared VDI or application delivery will require, Windows Server 2008R2 or later to be installed with Accops HyWorks Session Host Server role

For installation process of Accops HyWorks Session Host, please refer HyWorks v3.0 Installation Guide.

STEP#4.1: RESOURCE CONFIGURATIONS IN SHARED VDI

For Shared VDI or Application delivery, Microsoft Windows Server 2008R2/ 2012R2 or 2016 (installed with HyWorks Session Host Server) role can be used. Below steps can be used to add HyWorks Session Host Server in HyWorks:

ADD SESSION PROVIDERS

1. Go to Configuration -> Server -> Session Provider Section: Click on Add button
2. In Add Session Provider wizard,
 - a. Select **Category** as Shared Session Host, **Type** as Microsoft RDS server
 - b. Provide appropriate **Name** for session provider, enter IP or Hostname of the RDS server in **Host Address** field

Note: The Windows RDS server must be installed with Accops HyWorks Session Host Server role.

- c. Select **Session Team** (Session Teams can be created to have load balancing among the session host servers, by default there is always one session team in configuration, which cannot be deleted)
 - d. Click on **Add** button to configure
3. Session Host server is now configured and is ready for shared hosted desktop or application deliveries

Configuring Shared Hosted Desktop Pools or Publishing Applications

Until now the deployment has following configurations:

1. Authentication Domain is configured with appropriate authentication servers
2. Appropriate Shared Session Host Server is now added to server shared hosted desktops and applications to end users.

Creating Shared Hosted Desktop Pool

This section now will describe the process to create shared hosted desktop pool in brief:

1. Go to Configuration -> Workspace -> Desktop Pools section
2. Click on **Add** button -> In Add Desktop Pool wizard,
 - a. Provide logical name and description for desktop pool
 - b. Select **Entitlement Type** as Device based if it needs HyDesk devices to be assigned with Shared Hosted Desktop or Select as User based if assignments should be given to be users/groups/OUs
 - c. Select **Desktop Virtualization** Type as Shared Virtual Desktop
 - d. Select the **Server Team** as the session team in which target session host server is added
 - e. **Connection Profile** – Select any connection profile to be given to this desktop pool or leave as None
 - f. **Active** checkbox should be shown as selected
 - g. Click on **Next** button to proceed
 - h. On next page, add clients (users/groups or devices) as per selected Entitlement Type in first tab
 - i. Click on **Finish** button to save the desktop pool
3. Administrator will be navigated back to the Desktop Pools screen, showing the recently added desktop pool.

Publishing Applications and Making Entitlements

This section provides information on step by step guide to publish applications and then making the entitlements:

1. Go to Configuration -> Workspace -> Applications section
2. Click on **Add '+'** button to invoke the **Add Application** wizard
3. In **Add Application** Wizard,
 - a. In **Application Information** tab:
 - i. Select **Session Team** using dropdown in **Browse Application Details** section
 - ii. Select RDS Server from next dropdown screen
 - iii. Click on Browse button
 - iv. Click on **Browse** button to open **File System** dialog
 - v. In **File System** dialog, click on any displayed drive to navigate to application path

- vi. Navigate to the folder where application exe can be found and select the application.exe (google chrome application is selected in below image)
 1. It will automatically fetch the icon and will show success message in the same dialog
- vii. Click on **Get Details** button to go back to **Add Application** wizard
- viii. **Application Path** and **Application Internal Name** will get filled automatically
- ix. Provide appropriate entry for **Application Display Name**
- b. Click on **Next** button to proceed to **Additional Settings** tab
 - i. In **Additional Settings** tab, do not change any configurations except the following
 1. In **Access Settings** section, select **Create Desktop Shortcut** option
 - ii. Click on **Next** button to proceed
- c. In **Select Server** tab, select the displayed RDS server
 - i. Click on **Next** button to proceed
 - ii. In **Entitlements** tab,
 1. Click on **Add** button to add users or groups or OUs from here
 2. Or do not configure entitlements from this screen and click on **Save** button
 - iii. Application will be added and now will be listed in the **Applications** section

Configuring Entitlements

Once applications are published, entitlements can be done very easily from Entitlements section in Workspace.

For configuring entitlements, follow the below steps:

1. Go to Configuration -> Workspace -> Entitlements section
2. In **Entitlements** section,
 - a. Click on **User** to view/add/update entitlements of Users
 - b. Click on **Groups** to view/add/update entitlements of Groups
 - c. Click on **OUs** to view/add/update entitlements of OUs
 - d. Click on **Pools** to view/add/update entitlements of Pools (Available with User based pools only)
3. To add new entitlements e.g. Users Entitlements, Click on **Add Entitlement** button
4. In Add Entitlements wizard,
 - a. Click on **Add Users** button, search and select required users (The users will be searched from configured authorization server)
 - b. Click on **Next** button to proceed to **Applications** tab, in **Applications** tab, select the applications to be assigned to selected users
 - c. Click on **Next** button to proceed to **Connection Profiles** page, in **Connection Profiles** page, select the connection profile to be assigned to users (select none if no user specific connection profile should be assigned)
 - d. Click on **Save** button to save the entitlements
5. All selected Users will now be shown in the Entitlements -> Users section with respective count of applications.

Use the above specified process to configure Group/ OU/ Pool based entitlements.

After this step, users are now ready for login and on logon will be displayed with respective apps and shared hosted desktops.

STEP#4.2: RESOURCE CONFIGURATIONS IN DEDICATED VDI

For dedicated VDI, VMware (ESXi or vCenter Servers) or Microsoft (Hyper-V or SCVMM) can be added as Session Providers. To add them as Session Provider, follow the below steps

ADD SESSION PROVIDERS

1. Go to Configuration -> Server -> Session Provider Section: Click on Add button
2. In Add Session Provider wizard,
 - a. Select **Category** as Dedicated Session Provider
 - b. Select **Type** as Microsoft Hyper-V/ SCVMM or VMware/ vCenter
 - c. Provide appropriate **Name** for session provider, enter IP or Hostname of the session provider server in **Host Address** field
 - d. For VMware/ vCenter Server type, it will require username and password -> Provide appropriate entries for them as well.
 - e. Click on **Add** button to configure
3. Session provider is now configured and is ready for dedicated desktop deliveries

Note: To enable Microsoft Hyper-V or SCVMM server as Session Provider, additional HyWorks module Accops HyWorks Hyper-V Connector must be installed and running on Hyper-V or SCVMM servers.

Optionally if needed, administrators can also add External Desktop providers of type Propalms TSE or Pano Controller also.

CONFIGURING DESKTOP POOLS AND ASSIGNMENTS

Follow the below steps to get the desktops from Session Providers and assign them to desired users, groups or devices (HyDesk)

1. Go to Configuration -> Workspace -> Desktop Pools section
2. Click on **Add** button
3. In Add Desktop Pool wizard, in **General** section
 1. Provide logical name and description for desktop pool
 2. Select **Entitlement Type** as Device based if it needs HyDesk devices to be assigned with Shared Hosted Desktop or Select as User based if assignments should be given to be users/groups/OUs
 3. Select **Desktop Virtualization** Type as Dedicated Virtual Desktop
 4. Select Session Provider of category Dedicated Session provider in above section, which can be either VMware ESXi/ vCenter Server or Microsoft Hyper-V or SCVMM server
 5. **Desktop Provisioning** as **None** (if existing VMs from Session providers to be used) and select **Dynamic** (if new VMs to be provisioned on the Session provider). Selecting DVM Provisioning as Dynamic will enable the **Deployment** and **Customization** tabs and will require appropriate inputs from administrator.
 6. **Assignment Life Span** as **Permanent** (Assignments will be saved and the same desktop will be provided to the client on next logon) or select **Temporary** (if you wish to create non-persistent assignments which will get removed after the user has logged out.
4. Once all general configurations are done, move to the next screen by clicking on **Next** button
5. In **Desktops** tab, click on **Add Desktops** button to view and add the desktops -> Click on **Next** button to proceed
6. In **Devices/ Users** screen, add appropriate Users/ Devices as per Entitlement Type selected in General screen -> Click on **Next** button to proceed

7. In **Assignment** tab, configure the assignments for the desktops (automatic or manual configurations are possible)
8. Configure **Advance Settings** as per requirement and click on **Next** button to go to Summary page
9. Click on **Finish** button -> Desktop pool will be created and user will be navigated to Desktop Pools screen displaying recently added pool

Note:

- All the DVMs (except RDS type Session provider) should have HyWorks Tools installed to configure remote desktop services and power policies.
- In case of Dynamic provisioning the source DVM must have the latest HyWorks Tools installed so that all new cloned DVMs will also have the HyWorksTools pre-installed.

CHANGE ASSIGNMENTS FROM DESKTOPS VMS PAGE

Once the desktop pool is added, all configured desktops can be managed from **Monitoring** -> **Desktop VMs** screen

The section **Desktop VMs** can be used for assignment changes, power operations or removing the VM from the desktop pool.

USER LOGON FOR VERIFICATION

Once all above configurations are done, the last step is to login from Client or User Workspace portal and verify if all configurations are working correctly. Follow the steps specified below:

1. Launch HyWorks Client and connect to HyWorks Controller using IP or Hostname
2. On successful registration, **Controller** icon on HyWorks Client **Login** screen will become green and **Sign In** button will be enabled
3. Provide appropriate Username and Password to login and click on **Sign In** button
4. User will be navigated to Application Tray, having 3 tabs: Favorites, All Applications and Desktops -> All applications and desktops assigned to user will be displayed in respective tabs
5. Click on any application or desktop to access
6. User will be logged in as per the configurations.

Similar verifications can be done using User Workspace Portal or HyLite portals.

HYWORKS DEPLOYMENT WITH MULTI-ORGANIZATION STRUCTURE

HyWorks v3.0 supports multiple sub-organization creation, to have logical separation of resources. In this section, we will try to understand the multi-organization support and configuration process.

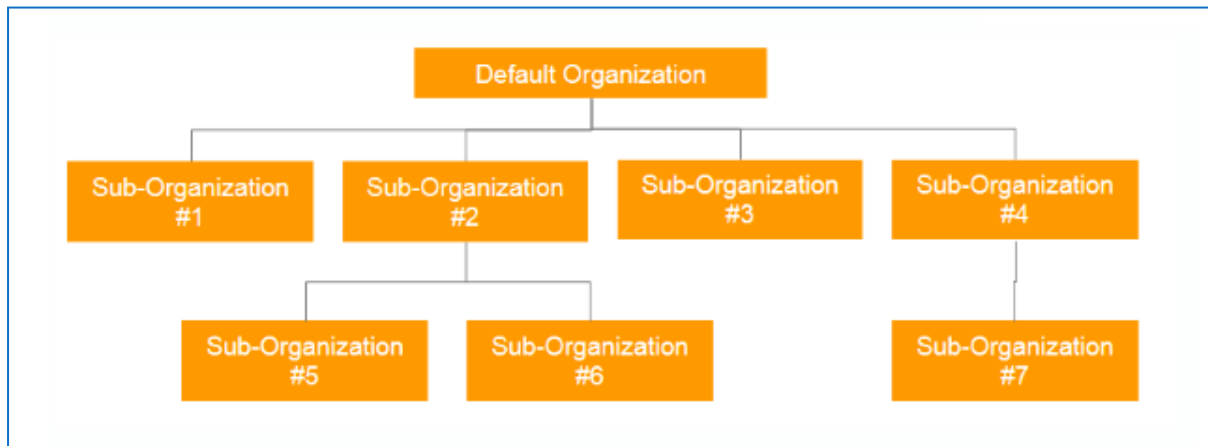
ORGANIZATION IN HYWORKS

An organization is a logical representation of the resources managed by HyWorks.

If the organization structure is flat and does not require any further logical division then resources can be configured in one default organization only i.e. configure Session host servers, authentication servers etc.

However, if the organization structure has multiple segments and each segment should use different resources then, administrator can create multiple organizations and configure with different resources.

An example of organization structure is:



QUICK CONFIGURATION STEPS FOR MULTI-ORGANIZATION STRUCTURE

Working with multi-organization structure is almost same like working with single organization structure, it's just all the configurations need to be done all the organizations.

Another very important aspect of multi-organization structure is, administrator must be able to identify the correct way to distribute the resources.

HyWorks Organization structure follows some basic rules:

1. Only parent organization resources can be shared with child organizations
2. Child organizations cannot share resources with sibling organizations or parents
3. Some configurations are global configurations and are either available to super-administrator or at the default organization level
4. Few resources cannot be shared e.g. Connection Profiles, Session Teams, Shared Hosted Session Host etc.
5. Few resources are sharable e.g. Authentication servers, Authentication Domains, Session Providers (Dedicated and External), Organization- Realm Settings etc.

Based on above few ground rules, organizational structure can be planned and deployed. E.g.

1. In a deployment where the single authentication server is there but the application servers are in workgroup and not part of domain, a structure can be followed where authentication server will be configured at root level and will be shared with all child organizations and while configure child organizations, every child organization can choose authentication server the one being shared from parent and authorization server as Built-in for workgroup environment.
2. In another deployment where only one vCenter server is available as session provider, it can be configured at root level and then child organizations can simple use this shared session provider and consume its desktop VMs as needed.
3. In a deployment, where no sharing is expected and they can use their own authentication server, nothing should be configured and shared from parent, instead each child organization can define resources at its level and consume their only.

For deployment in multi-organization structure can follow the below high level steps:

1. [Install HyWorks Controller](#)
2. [Configure Resources at default organization level](#)
 - a. These resources can be then shared with child resources
 - b. To use resources at default level only
3. [Create Child Organization](#)
4. [Configure Child Organization Resources](#)
5. Login and Verify

INSTALL HYWORKS CONTROLLER

HyWorks Controller installation process is exactly same as installation process for single organization as specified in section: [Step#1: Install HyWorks controller Service and Management Console](#)

CONFIGURE RESOURCES AT DEFAULT ORGANIZATION LEVEL

Resource configuration process at default organization is already specified in the following section of this documents:

- [Step#2 Adding Authentication Server and Authentication Domain Configuration](#)
- [Step#4.1: Resource Configurations in Shared VDI](#)
- [Step#4.2: Resource Configurations in Dedicated VDI](#)

The one very important aspect of resource configurations at default organization level is to share the resources with all organizations. Some very common resources could be:

1. Dedicated Session Providers e.g. VMware/ vCenter Server or Microsoft Hyper-V/ SCVMM server
2. Authentication Servers and Authentication Domains
3. Realm Settings

The more information on sharable resources is provided in HyWorks v3.0 Admin Guide. Once the resources are configured at the default level. The next step is to create the child organization.

CREATE CHILD ORGANIZATION

1. Login as default super-administrator into HyWorks Controller Management Console
2. Go to Configuration – Workspace – Organizations
3. Select **Default** Organization and click on **Add** button
4. In Add Organization wizard
 - a. In Organization Details tab
 - i. Provide logical short name and code for organization e.g. childorg1
 - ii. Select **Inherit Resources** if the parent organization's resources should be shared with this child organization
 - iii. Select **Active** to mark organization as active
 - iv. Select **Create Realm** to define realm settings specific to this organization (Keep it unchecked to use parent's realms settings; If Create Realm is unchecked all realm settings will be hidden)
 - v. Select option **Create Auth Domain** to specify Auth Domain settings for this organization. (If **Create Auth Domain** is unchecked, the tab for Authentication domain will not be displayed, and authentication domain of parent or default organization will be used)
 1. If Create Auth Domain is checked, Authentication Domain tab will be enabled and will require appropriate configurations for

the child organization. If Inherit Resources option is checked, then administrator will also be able to see and view the authentication servers added in default organization.

5. Save the Organization details.
6. Organization is created and now available under the default node.

MOVE TO CHILD ORGANIZATION AND CONFIGURE RESOURCES AT CHILD ORGANIZATION

Once the child organization is created successfully, use the below steps to move to the child organization and configure resources specific to this organization.

Move to the Child Organization: Before configuring the resources, it is required to move to the intended child organization level as all resources are always configured at selected organization level only. Follow the below steps:

1. Login as default super-administrator into HyWorks Controller Management Console
2. At the top right corner the Organization Selection dropdown labeled as **Current Organization** is available -> Select the child organization, you wish to navigate into.
3. Click on **Select Organization** button
4. Administrator will now be moved to child organization.

Now all resources being configured will be available at this child level.

RESOURCE CONFIGURATIONS IN CHILD ORGANIZATION

Resource configurations in child organization is exactly same as configuring resources at default level. More information is available in the following section of this documents:

- [Step#2 Adding Authentication Server and Authentication Domain Configuration](#)
- [Step#4.1: Resource Configurations in Shared VDI](#)
- [Step#4.2: Resource Configurations in Dedicated VDI](#)

In addition to above, child organizations inheriting resources from parent can also use shared resources such as Applications for adding subtitles to those applications, Dedicated Session Providers to create Desktop Pools, authentication servers from parent to configure Authentication domains etc.

USER LOGON FOR VERIFICATION

Once all above configurations are done, the last step is to login from Client or User Workspace portal and verify if all configurations are working correctly. Follow the steps specified below:

1. Launch HyWorks Client and connect to HyWorks Controller using IP or Hostname
2. On successful registration, user will be navigated to **Organization** selection screen as the controller is now having multiple organization
3. On selection of desired organization, user will be navigated to the **Login** screen, **Sign In** button will be enabled
4. Provide appropriate Username and Password to login and click on **Sign In** button
5. User will be navigated to Application Tray, having 3 tabs: **Favorites**, **All Applications** and **Desktops** -> All applications and desktops assigned to user will be displayed in respective tabs
6. Click on any application or desktop to access
7. User will be logged in as per the configurations.

Similar verifications can be done using User Workspace Portal or HyLite portals.

Administrator can follow similar steps to configure more child organizations. The multi-organization configuration is now completed.

ASSUMPTIONS

Following assumptions are made while creating this document:

1. Session Providers which can be VMware ESXi, VMware vCenter Server, Microsoft Hyper-V or SCVMM, HyWorks Session Host Server on Microsoft Windows server, Pano Controller or TSE are already installed and ready.
2. HyWorksTools (HyWorks DVM agent) is already installed on the target Desktop VMs or the remote desktop settings are pre-configured on the target Desktop VMs (To get a successful uninterrupted remote session)
3. Devices can connect to HyWorks Controller and target DVM
4. Refer document '**Readying VM for Deployment in HyWorks**' for detailed instructions on readying the virtual machines for deployment in HyWorks Suite

REFERENCES

- HyWorks Documents: Readying VMs for Deployment in HyWorks
- HyWorks Documents: Accops HyWorks Admin Guide
- HyWorks Documents: Accops HyWorks Controller Installation Guide